

S20
PLANTA
ESC: 1:25

CORTE
ESC: 1:30

S21
PLANTA
ESC: 1:25

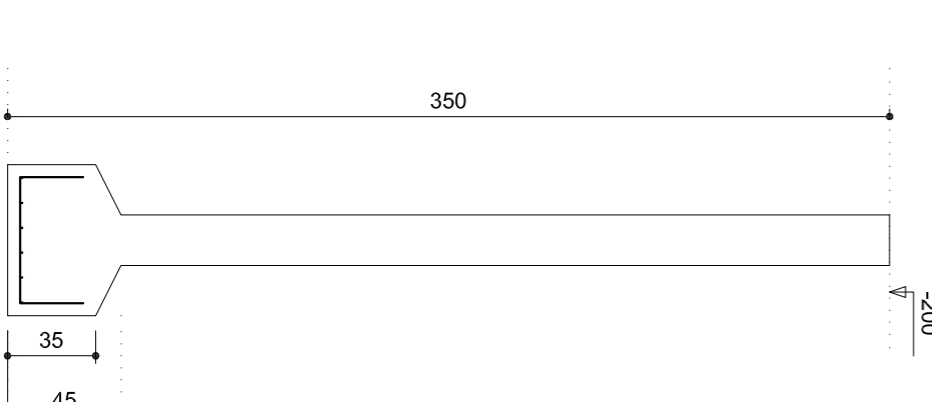
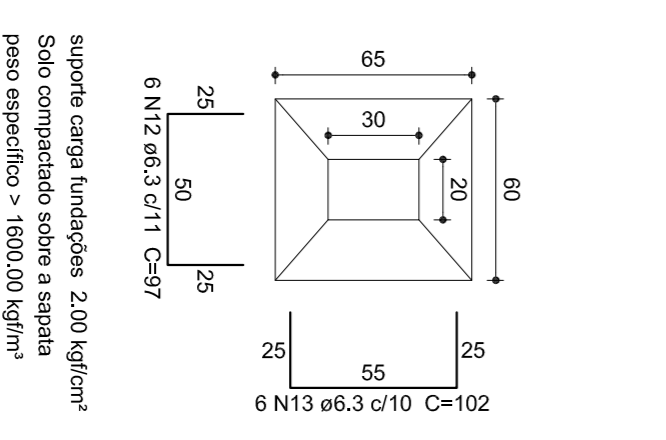
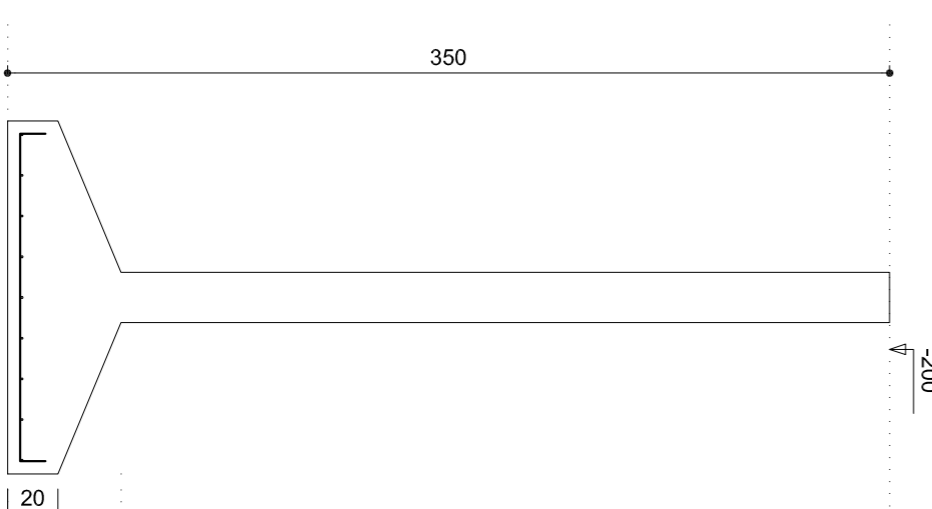
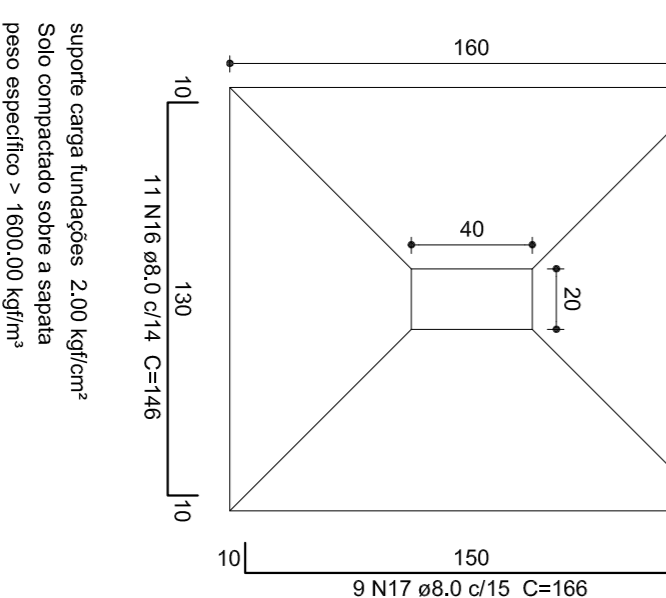
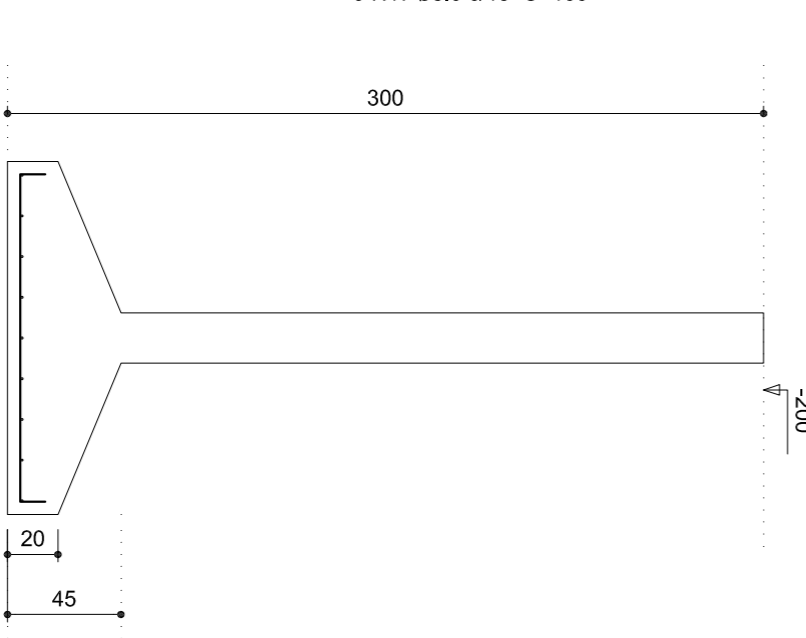
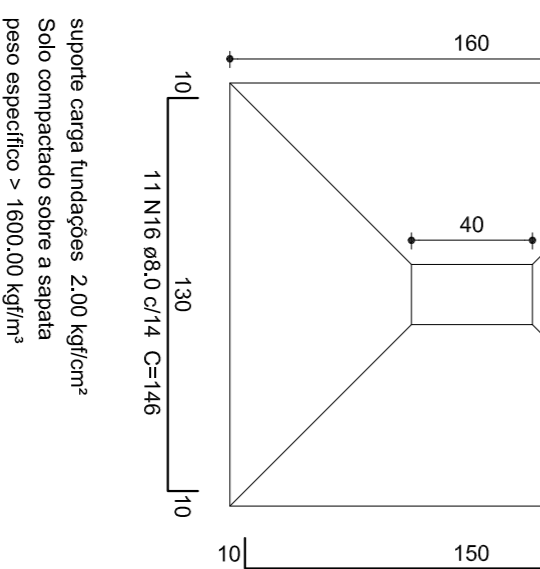
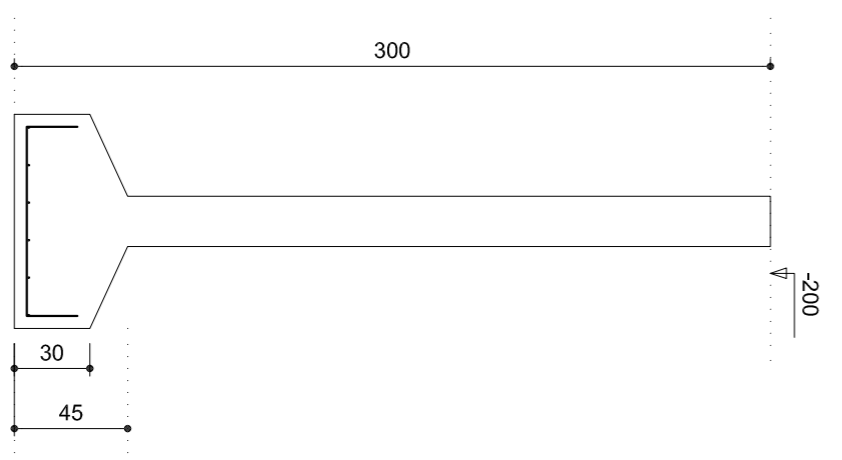
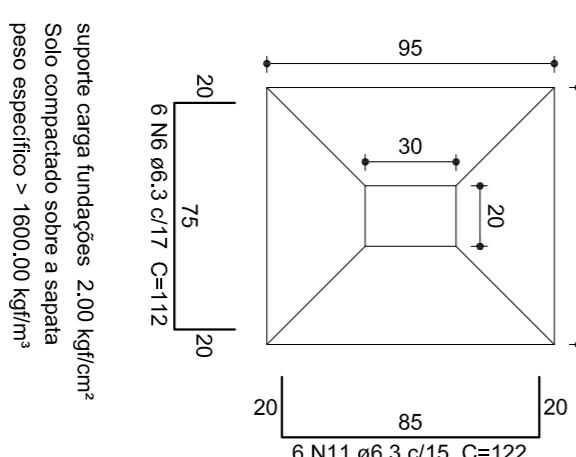
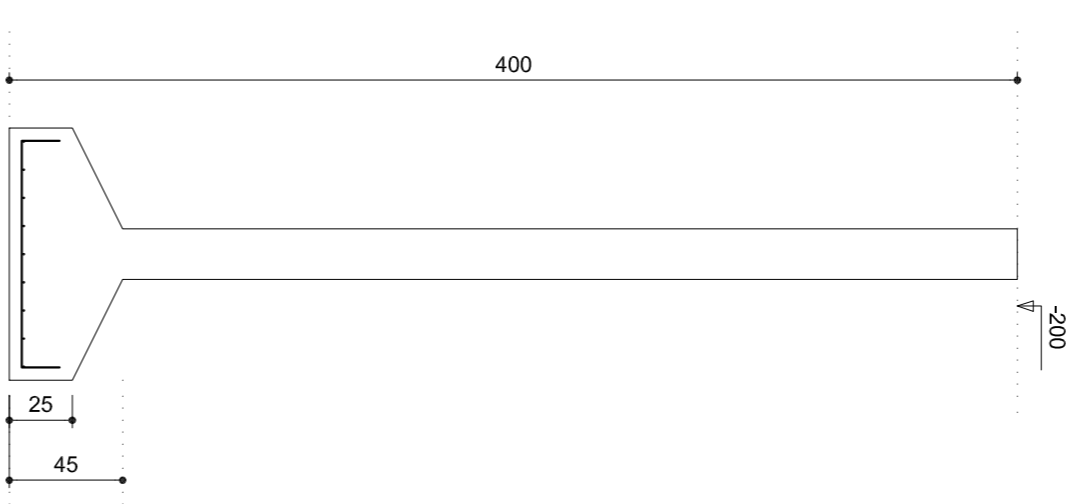
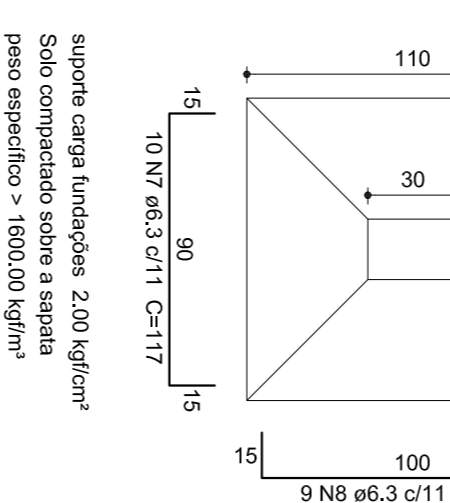
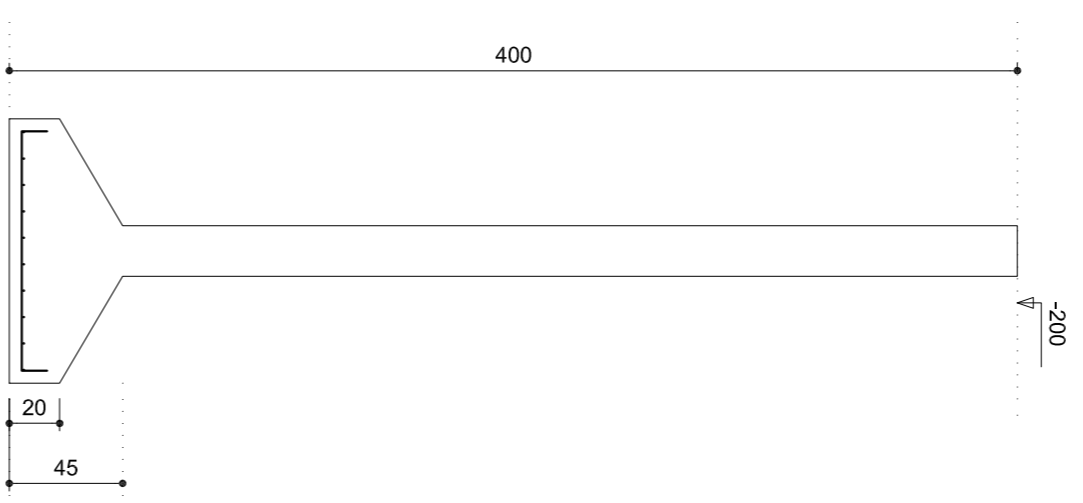
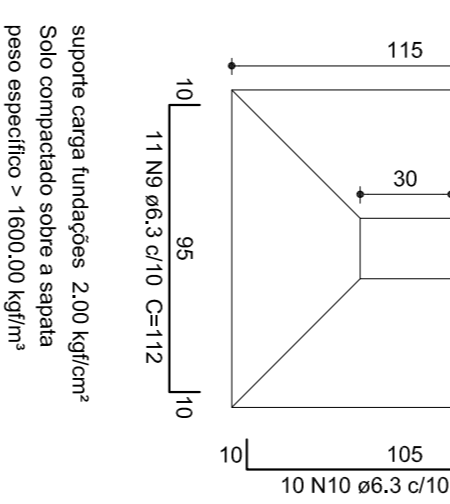
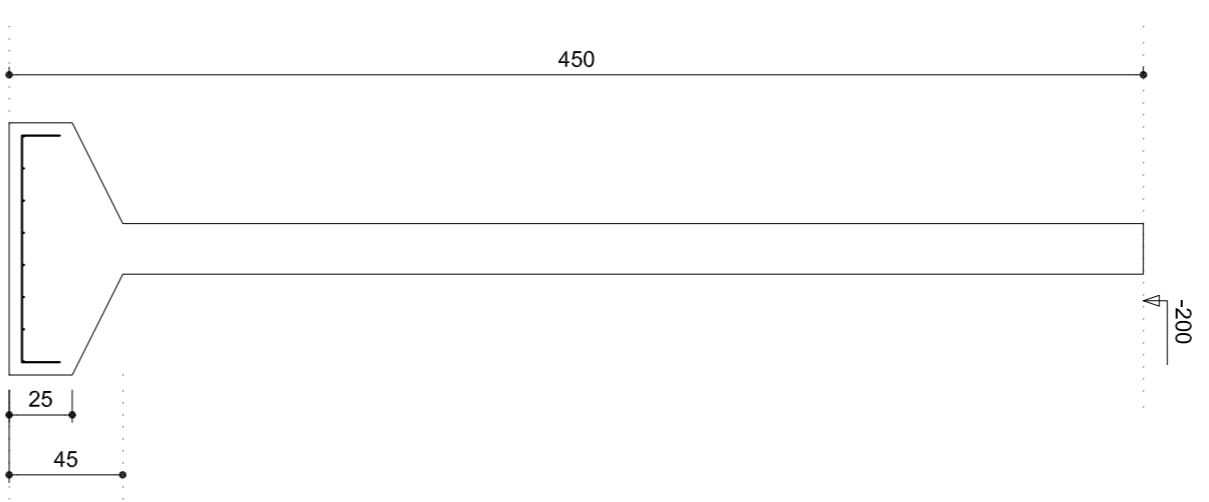
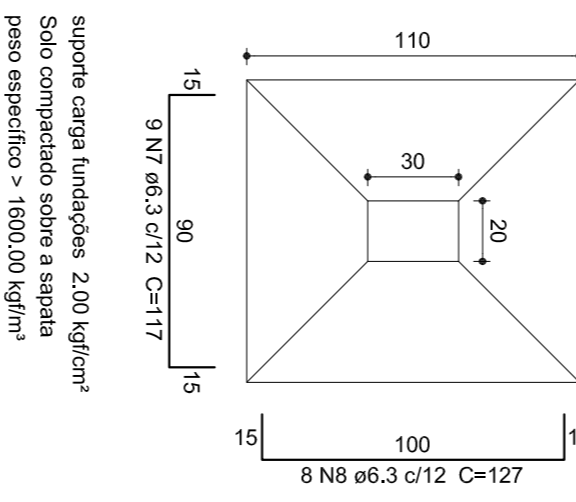
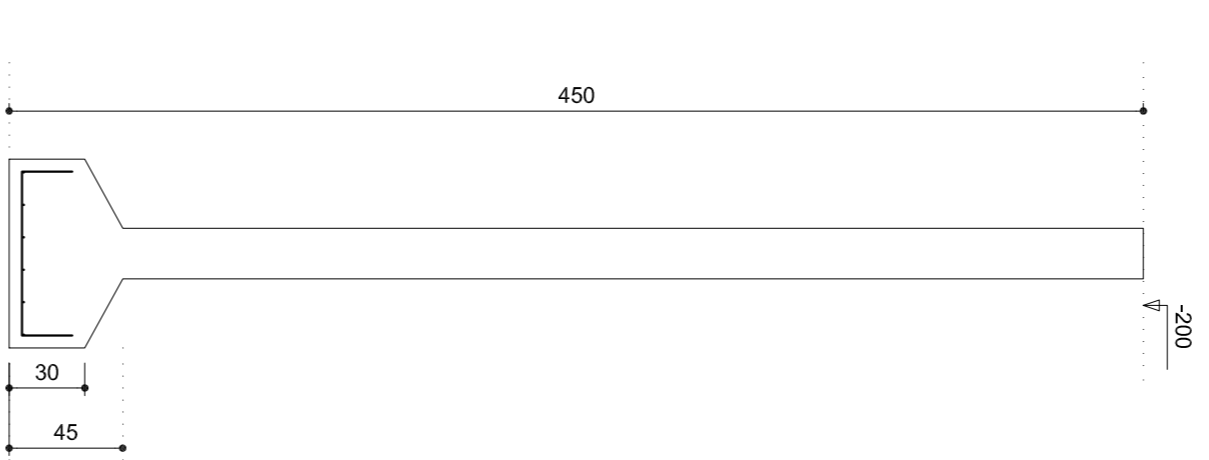
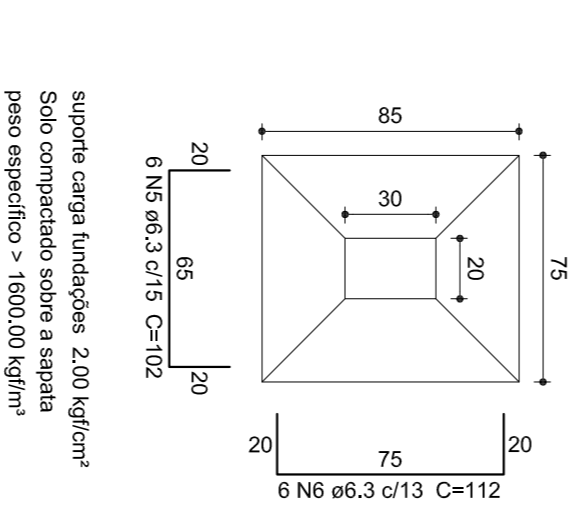
CORTE
ESC: 1:30

S22
PLANTA
ESC: 1:25

CORTE
ESC: 1:30

S23
PLANTA
ESC: 1:25

CORTE
ESC: 1:30



Relação do aço

ACO	N	DIAM	QUANT	DMT	C/TOTAL
CA50	1	6.3	1177	102	2301
	2	6.3	11	197	2167
	3	6.3	8	182	1336
	4	6.3	8	182	1436
	5	6.3	12	182	1436
	6	6.3	18	112	2016
	7	6.3	19	117	2223
	8	6.3	17	127	2159
	9	6.3	11	112	1232
	10	6.3	11	122	1232
S450	1	6.3	1177	102	2301
	2	6.3	11	197	2167
	3	6.3	8	182	1336
	4	6.3	8	182	1436
	5	6.3	12	182	1436
	6	6.3	18	112	2016
	7	6.3	19	117	2223
	8	6.3	17	127	2159
	9	6.3	11	112	1232
	10	6.3	11	122	1232
S52	1	6.3	1177	102	2301
	2	6.3	11	197	2167
	3	6.3	8	182	1336
	4	6.3	8	182	1436
	5	6.3	12	182	1436
	6	6.3	18	112	2016
	7	6.3	19	117	2223
	8	6.3	17	127	2159
	9	6.3	11	112	1232
	10	6.3	11	122	1232
S56	1	6.3	1177	102	2301
	2	6.3	11	197	2167
	3	6.3	8	182	1336
	4	6.3	8	182	1436
	5	6.3	12	182	1436
	6	6.3	18	112	2016
	7	6.3	19	117	2223
	8	6.3	17	127	2159
	9	6.3	11	112	1232
	10	6.3	11	122	1232
S57	1	6.3	1177	102	2301
	2	6.3	11	197	2167
	3	6.3	8	182	1336
	4	6.3	8	182	1436
	5	6.3	12	182	1436
	6	6.3	18	112	2016
	7	6.3	19	117	2223
	8	6.3	17	127	2159
	9	6.3	11	112	1232
	10	6.3	11	122	1232
S58	1	6.3	1177	102	2301
	2	6.3	11	197	2167
	3	6.3	8	182	1336
	4	6.3	8	182	1436
	5	6.3	12	182	1436
	6	6.3	18	112	2016
	7	6.3	19	117	2223
	8	6.3	17	127	2159
	9	6.3	11	112	1232
	10	6.3	11	122	1232
S59	1	6.3	1177	102	2301
	2	6.3	11	197	2167
	3	6.3	8	182	1336
	4	6.3	8	182	1436
	5	6.3	12	182	1436
	6	6.3	18	112	2016
	7	6.3	19	117	2223
	8	6.3	17	127	2159
	9	6.3	11	112	1232
	10	6.3	11	122	1232
S60	1	6.3	1177	102	2301
	2	6.3	11	197	2167
	3	6.3	8	182	1336
	4	6.3	8	182	1436
	5	6.3	12	182	1436
	6	6.3	18	112	2016
	7	6.3	19	117	2223
	8	6.3	17	127	2159
	9	6.3	11	112	1232
	10	6.3	11	122	1232
S61	1	6.3	1177	102	2301
	2	6.3	11	197	2167
	3	6.3	8	182	1336
	4	6.3	8	182	1436
	5	6.3	12	182	1436
	6	6.3	18	112	2016
	7	6.3	19	117	2223
	8	6.3	17	127	2159
	9	6.3	11	112	1232
	10	6.3	11	122	1232
S62	1	6.3	1177	102	2301
	2	6.3	11	197	2167
	3	6.3	8	182	1336
	4	6.3	8	182	1436
	5	6.3	12	182	1436
	6	6.3	18	112	2016
	7	6.3	19	117	2223
	8	6.3	17	127	2159
	9	6.3	11	112	1232
	10	6.3	11	122	1232
S63	1	6.3	1177	102	2301
	2	6.3	11	197	2167
	3	6.3	8	182	1336
	4	6.3	8	182	1436
	5	6.3	12	182	1436
	6	6.3	18	112	2016
	7	6.3	19	117	2223
	8	6.3	17	127	2159
	9	6.3	11	112	1232
	10	6.3	11	122	1232
S64	1	6.3	1177	102	2301
	2	6.3	11	197	2167
	3	6.3	8	182	1336
	4	6.3	8	182	1436
	5	6.3	12	182	1436
	6	6.3	18	112	2016
	7	6.3	19	117	2223
	8	6.3	17	127	2159
	9	6.3	11	112	1232
	10	6.3	11	122	1232
S65	1	6.3	1177	102	2301
	2	6.3	11	197	2167
	3	6.3	8	182	1336
	4	6.3	8	182	1436
	5	6.3	12	182	1436
	6	6.3	18	112	2016
	7	6.3	19	117	2223
	8	6.3	17	127	2159
	9	6.3	11	112	1232
	10	6.3	11	122	1232
S66	1	6.3	1177	102	2301
	2	6.3	11	197	2167
	3	6.3	8	182	1336
	4	6.3	8	182	1436
	5	6.3	12	182	1436
	6	6.3	18	112	2016
	7	6.3	19	117	2223
	8	6.3	17	127	2159
	9	6.3	11	112	1232
	10	6.3	11	122	1232
S67	1	6.3	1177	102	2301
	2	6.3	11	197	2167